

A ☒ No further submission.
Document accepted as final.
P ☐ Incorporate comments and
resubmit the document.
X ☐ Document not accepted and
rejected.

REFERENCE - SAMPLE

MAC - Transport and Lifting Drawing for Main Equipment

CONFIDENTIAL

Comments:	Dpt.:	Date:
None	ENCR1	21. Dec 2023
Name:	Bernhard Klumm	

Comments:	Dpt.:	Date:
000	GPXL	19. Dec 2023
Name:	Andy Beier	

Vendor Name – Atlas Copco Energas	Vendor Project Number - 53138976
Vendor Document Number - 53138976-30	Vendor Document Revision - 02

IFR	04	08.12.2023	[W. Wanner]	[T. Heinen]	[B. Willuhn]	
IFR	03	22.11.2023	[M. Majhi]	[W. Wanner]	[T. Heinen]	
IFR	02	29.09.2023	[D. Lux]	[W. Wanner]	[T. Heinen]	
IFR	01	11.07.2023	[R. Castor]	[W. Wanner]	[T. Heinen]	
Status	Issue	Date	Prepared	Reviewed	Approved	Remark

Confidential

The reproduction, distribution and utilization of this document as well as the communication of its contents to others may be subject to the terms and conditions of the EPC contract (No.5600023155).
All rights reserved in the event of the grant of a patent, utility model or design.

Packing considering &ASU K-BX 1002 - Packing, Marking Transport instructions K-01-1510CD77 Plock ASU III" and below equipment-related specifications:

1. Core Unit Packing for Transport

- Aluminum compound foil will be placed between transport frame and bottom of the gear housing.
- A prepared Aluminum compound foil hood will be loose supplied with the core unit for on-site attachment (welding to bottom foil). Welding to bottom foil will be done by Atlas Copco contractor.
- Dry agent to be applied on site to the core unit by Atlas Copco contractor.
- The foil will not cover the entire core unit during transport in order to prevent the foil from damaging.
- A tarpaulin cover will be used during transport.

Final packing on site is applicable for outdoor storage for 12 months provided that foil remains undamaged and hence no moisture can enter the foil. Regular checks of foil and humidity indicators to be carried out by Linde / site personnel.

2. Oil system Packing for Transport

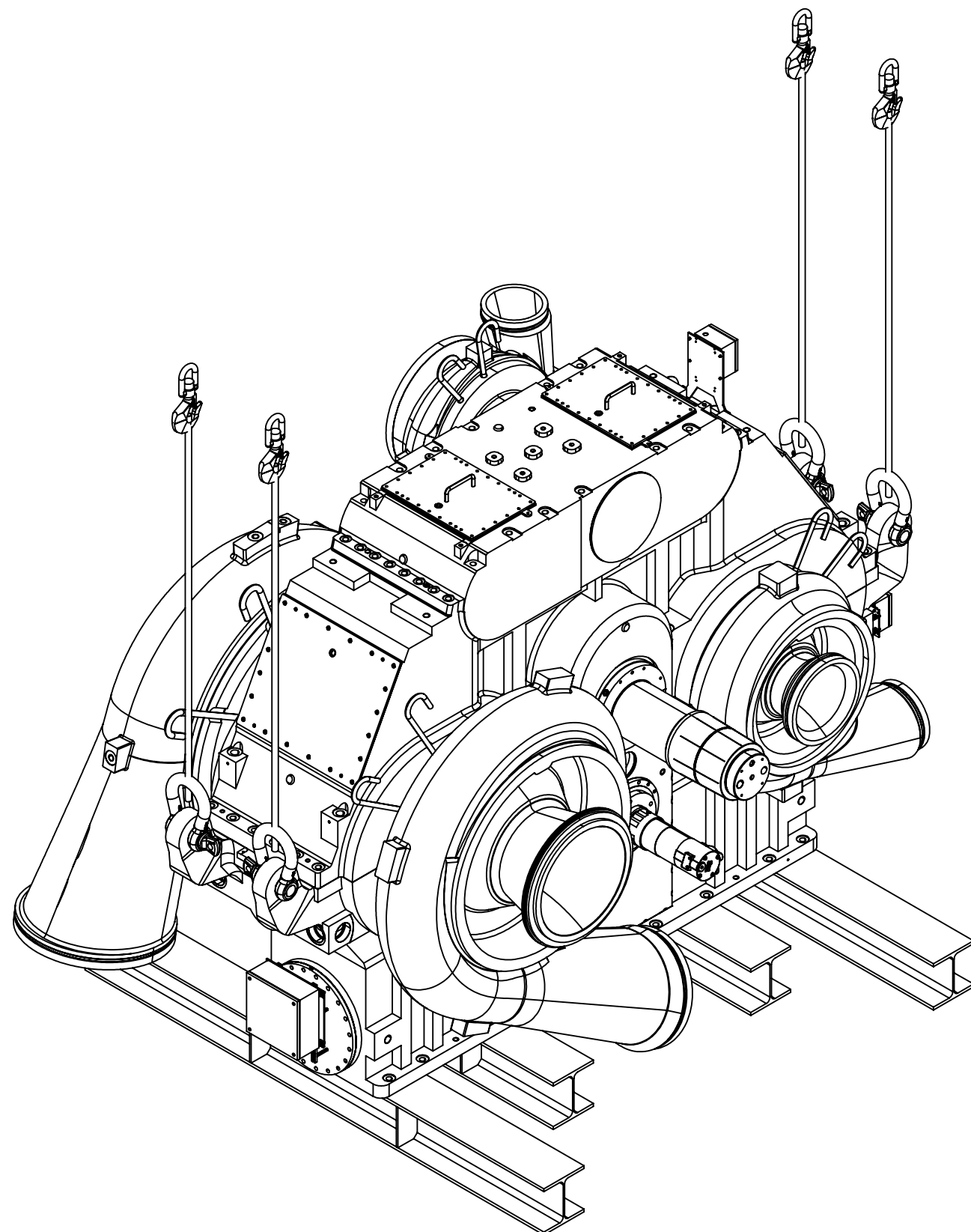
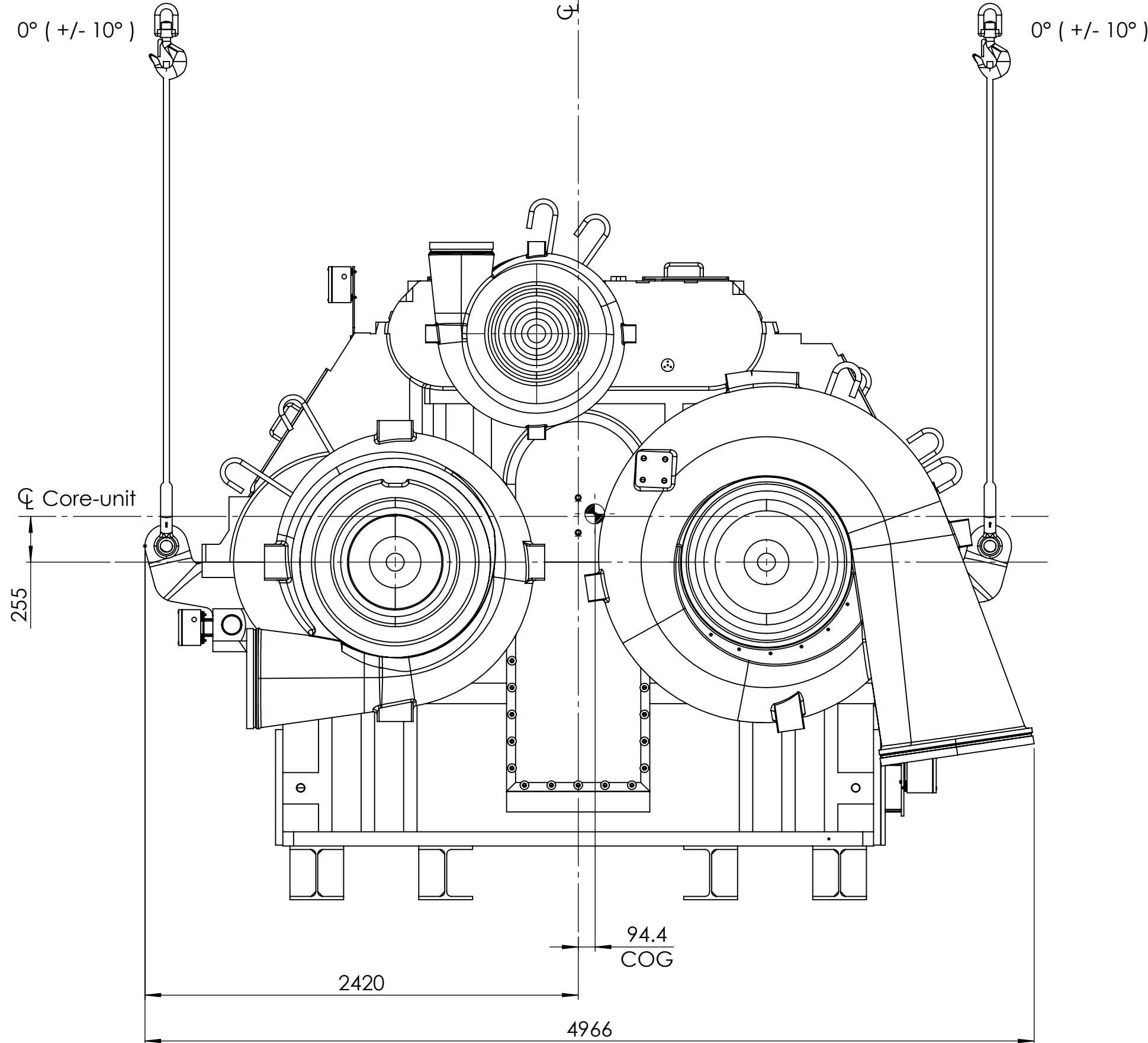
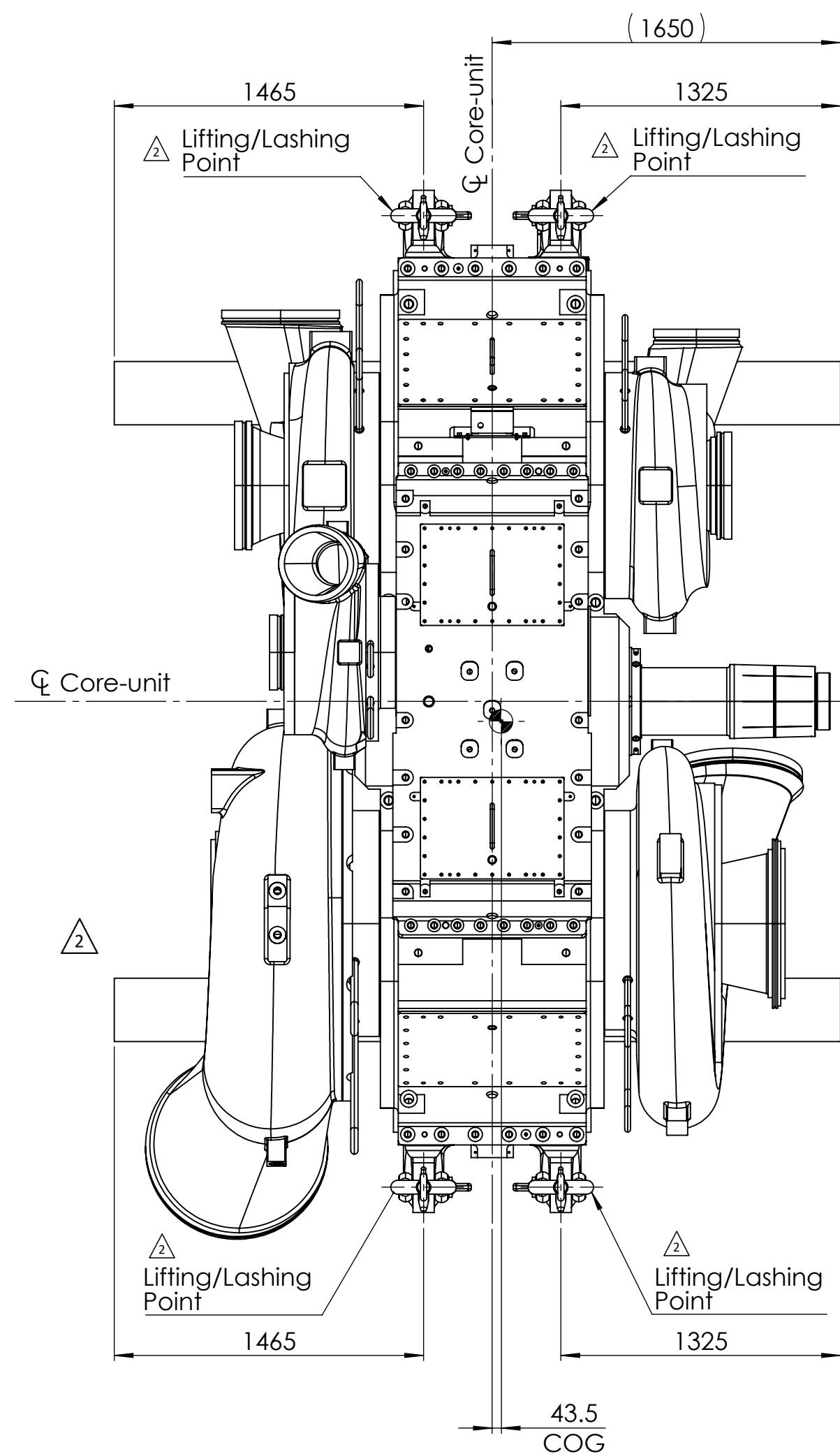
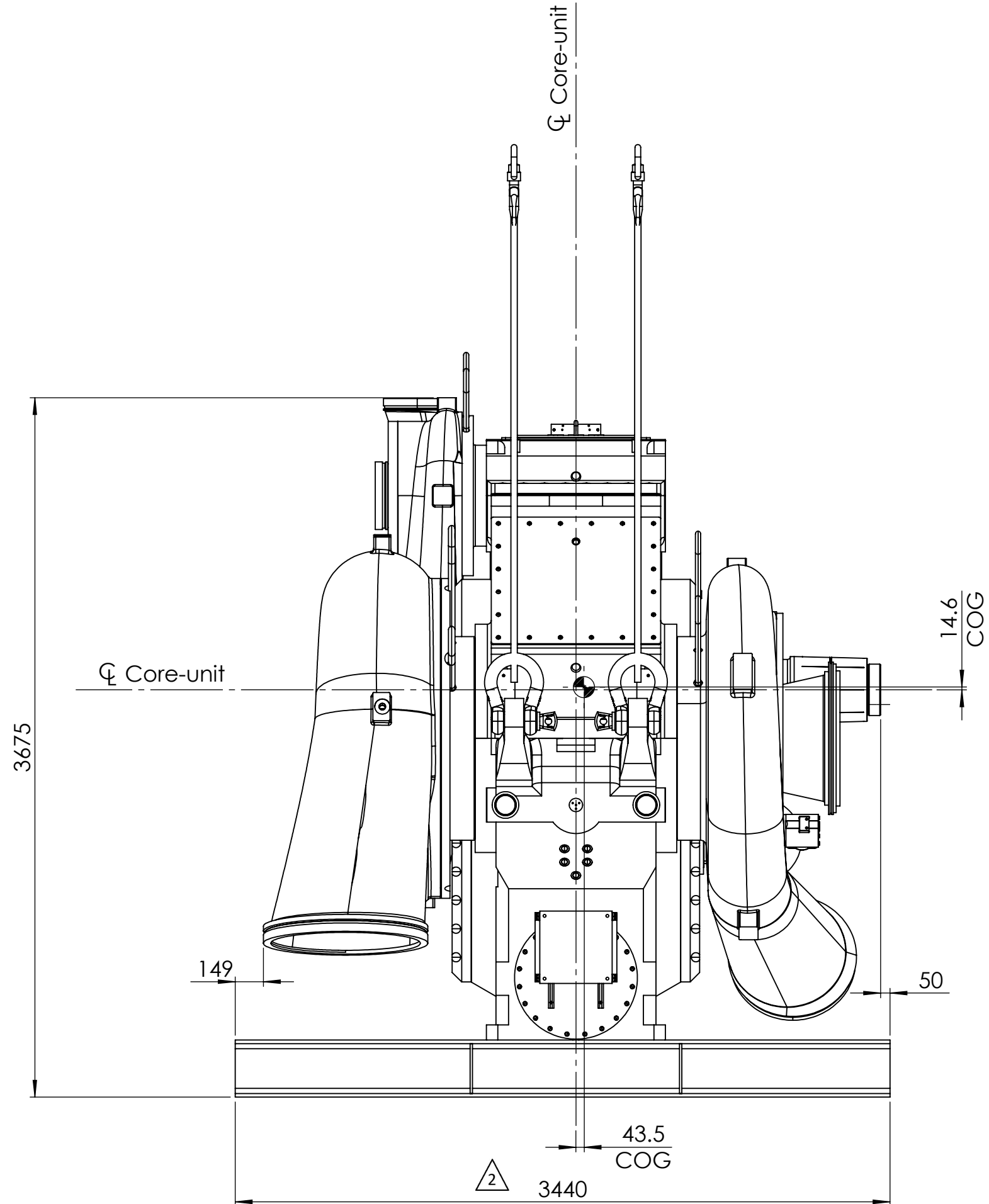
- VCI film
- Humidity absorbers
- Heat shrinkable film
- A tarpaulin cover will be used during transport.

Final packing on site is applicable for outdoor storage for 12 months provided that foil remains undamaged and hence no moisture can enter the foil. Regular checks of foil and humidity indicators to be carried out by Linde / site personnel.

Note: Packing acc. to category 5a or 6a is not applicable for coreunit and oil system as mutually agreed between Linde and ACE (no wooden crate, otherwise roadworthy packing is not possible).

Property of Atlas Copco (Gas and Process Division).
Any unauthorized use or copying of this document or
any part thereof is prohibited (1715 K).

2	See revision mark	SS	17-11-2023		
REV	Revision Text:	Drawn by:	Drawn Date:	Approved by:	Approved Date:



WEITERE INFORMATIONEN ZUM VERZURREN, SIEHE ZEICHUNG G-002215440.
REFER TO DRAWING G-002215440 FOR ADDITIONAL LASHING INFORMATION.

IGV BAUGRUPPE 2-te STUFE INKL. ANTRIEB FÜRTRANSPORT DEMONTIERT. IGV ANTRIEB UND KONSOLE 1-te STUFE FÜRTRANSPORT DEMONTIERT

2nd STAGE IGV ASSEMBLY GROUP ANDACTUATOR DISMATLED FOR TRANSPORT.
1st STAGE IGV ACTUATOR AND CONSOLE DISMANTLED FOR TRANSPORT.

BEI ANHEBEN MIT VORGEGEBENER MIN. HAKENHÖHE LAUFEN SCHLINGEN KOLLISIONSFREI.

SLINGS RUN WITHOUT COLLISION WHEN LIFTING WITH THE GIVEN MIN. HOOK HEIGHT


GEWICHT / WEIGHT CORE UNIT 49860 kg
GEWICHT / WEIGHT TRANSPORT HEB 1340 kg
TOTAL TRANSPORT / LIFTING WEIGHT 51200 kg

Project No.	53138976
Project Name:	Plock MAC HP
Maschine typ:	GT087L5K1

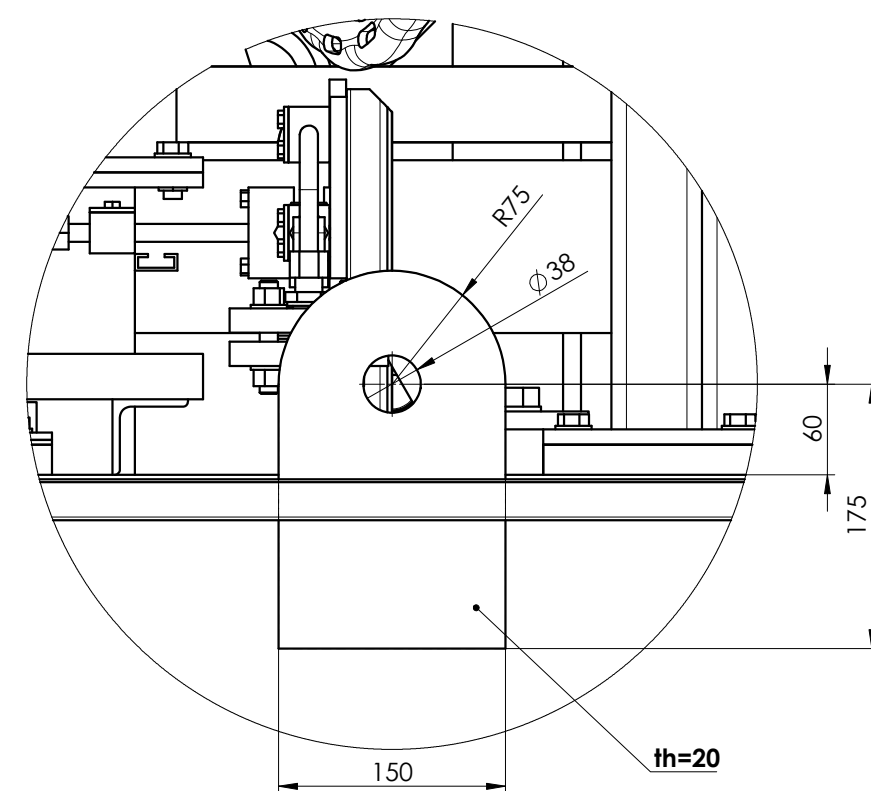
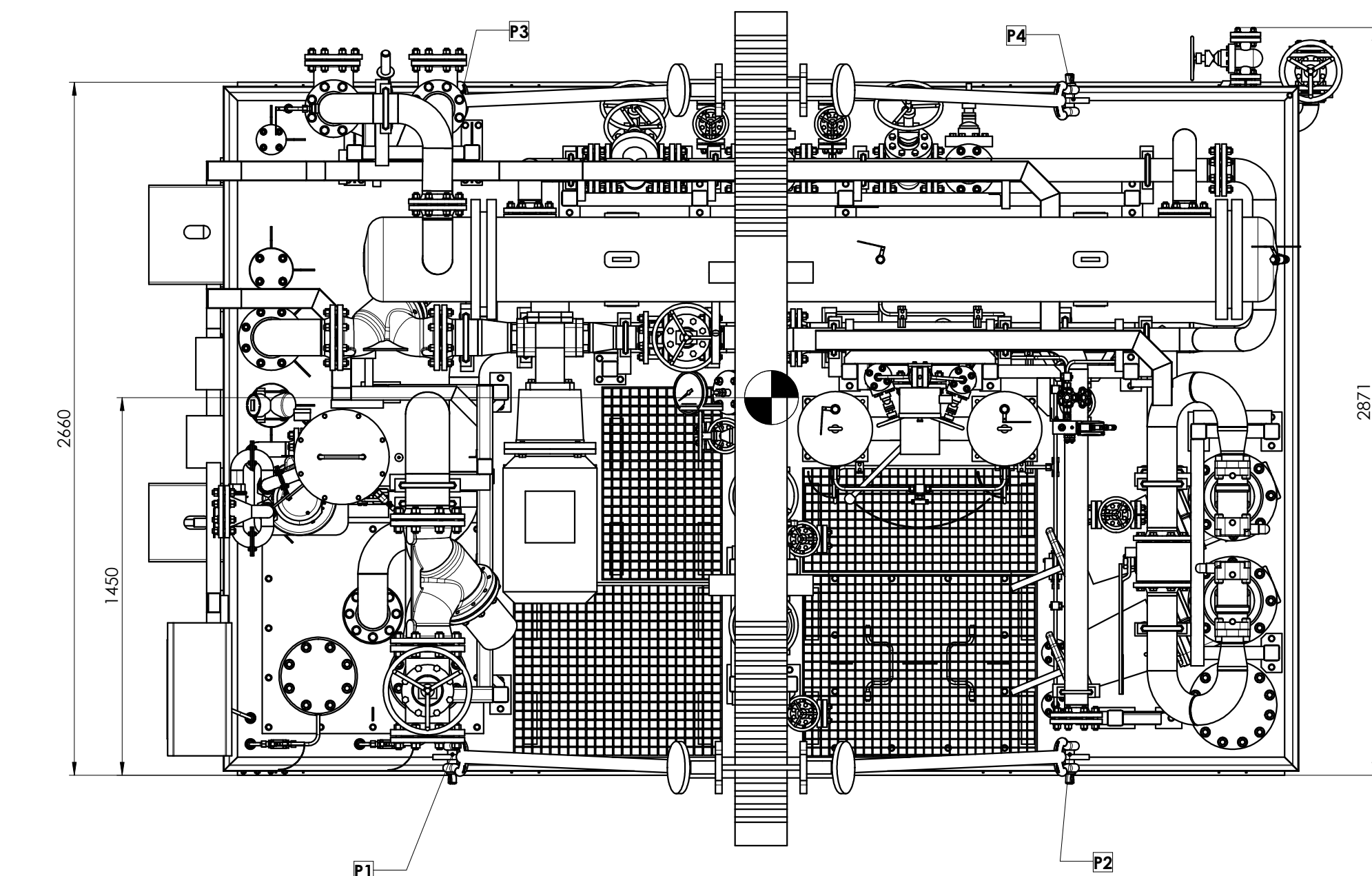
E-Part:
-

All materials supplied are in compliance with the requirements of the List of Prohibited Substances: (see AC's database Substances of Concern).

*) manufacturing drawing;
General tolerances: DIN ISO 2768-mK
Surface texture: EN ISO 1302
Tolerancing: DIN ISO 8015
Chamfer: ISO 13715
Casting drawing: WN 010.50.3
Observe protection notice: ISO 16016

Tolerances, if not indicated, according to ATLAS COPCO STANDARD/Klasse/Class *)		Machined surface	Confidentiality Class:	General tolerances:	 Multiview orthographic projection DIN ISO 5456-2
Description: Transport and Lifting Drawing		1350K/	acc. to 1102 K	1350-m	
Material:		Drawn by: ENGABINE		Checked by:	Drawing Owner
Description:		Drawn Date: 24-05-2023		Approved Date: 01-06-2023	
Material:		Version: 03/2023, Transport Lifting		Doc Number:	Current sheet/total sheets
Transferred from:		Size: A1		1:25	

G-002670863 1 / 1



Handling Instructions:
CAUTION!
Danger to life if the tube oil plate falls down or tips over Working under hanging load is strictly forbidden!
Please observe the following points when handling/lifting:
- Use only the four marked lifting eyes P1-P4.
- Lifting devices and fastening tackle must be suitable for carrying the corresponding weights.
- Attachment points and the centre of gravity are marked in the drawing. Apply the fastening tackle as shown in the drawing.
- Use a separate rope for each attachment point.
- Ensure that machine unit parts like piping, valves, instruments etc. are protected against damage by fastening tackle.
- Use the fastening tackle or the lifting beam to balance out the centre of gravity. The oil unit must absolutely be lifted horizontally.
- Do not lift when ambient temperature is below -20 °C

TOTAL WEIGHT (EMPTY)	7450 kg \pm 10%
----------------------	-------------------


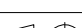
The weight of the lifting device and fastening tackle is not included in the total weight!

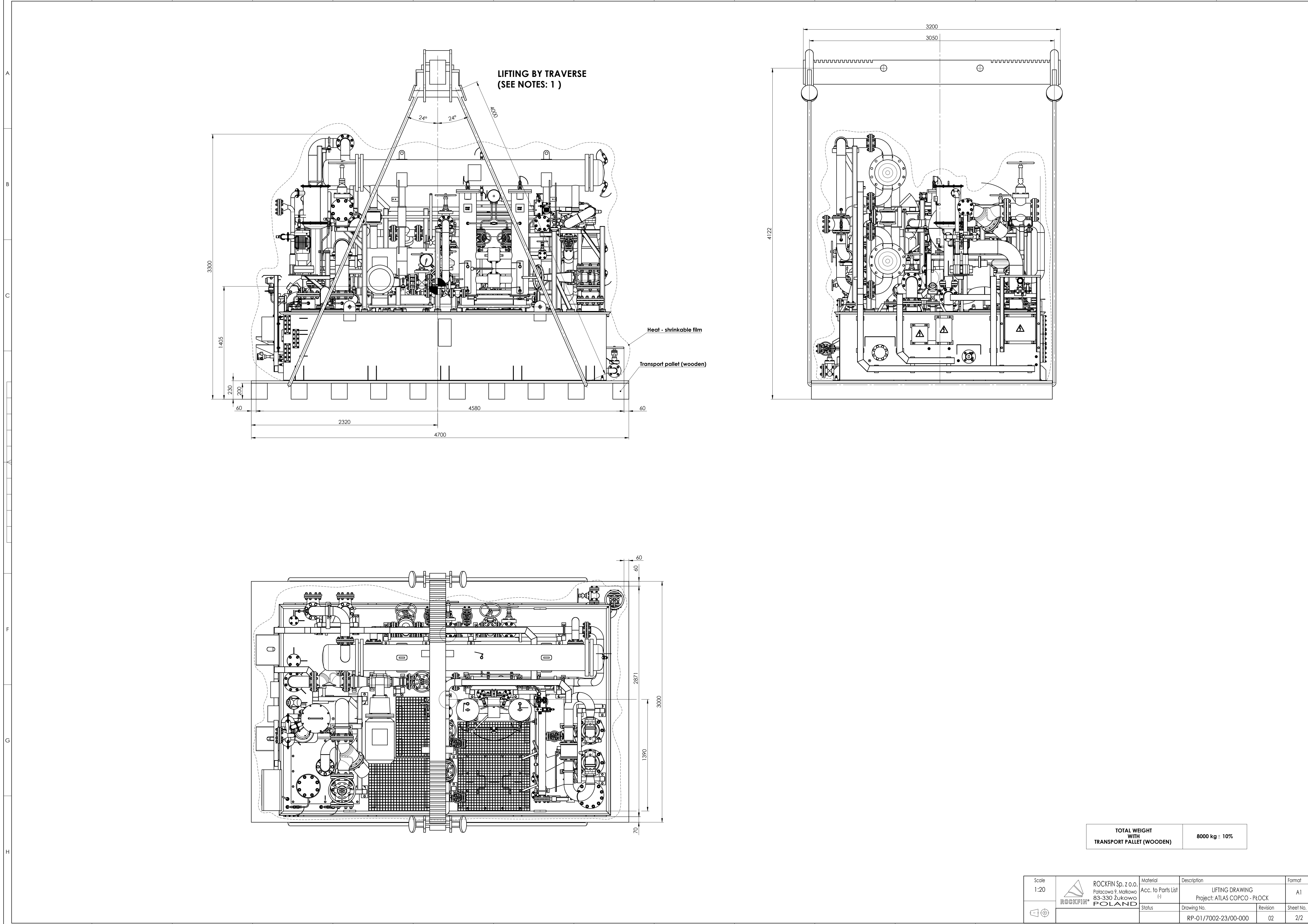
REMARKS:

1. ALL LIFTING ACCESSORIES (SHACKLES, HOOK, POLYESTERBELTS OR CHAIN, ETC.) ARE NOT INCLUDED IN SCOPE OF SUPPLY OF LUBE OIL SKID, THIS ELEMENTS HAVE TO BE SELECTED AND USED ADEQUATELY TO LIFTING WEIGHT AND ANGLES.
2. RESPONSIBLE FOR PROPER SELECTION OF LIFTING ACCESSORIES IS INVOLVED IN PERSON/COMPANY THAT LIFTS THE UNIT.
3. TANK, FILTER AND PIPINGS HAVE TO BE FULLY DRAINED BEFORE LIFTING. LIFTING FILLED UNIT OF WORKING MEDIUM IS PROHIBITED.

UWAGI:

1. WSZYSTKIE AKCESORIA DO PODNOSZENIA UKŁADU (SZKIEŁA, HAKI, PASY TRANSPORTOWE LUB ŁAŃCUGIWIPT) SĄ POZA ZAKRES DOSTAWY. ELEMENTY TE NALEŻY DOBRAĆ I WYKORZYSTAĆ ODPOWIEDNIO DO CIĘŻARU UKŁADU I ZALECANYCH KĄTÓW.
2. ODPOWIEDZIALNOŚĆ ZA PRAWIDŁOWY DOBÓR ODPOWIEDNICH AKCESORIÓW DO PODNOSZENIA PONOSI OSOBA/FIRMA, KTÓRA PODNOSI UKŁAD.
3. ZBIORNIK, FILTR I RUROCIĄGI NALEŻY CAŁKOWICIE WYPŁYNIAĆ PRZED PODNOSZENIEM UKŁADU.
4. PODNOSZENIE UKŁADU WYPEŁNIONEGO CZYNNIEMKIM BOBOCZYNIEM JEST ZABRONIONE.

Revision no.		Date		Signature		Remarks		Revision no.		Revision city		Date		Signature		Remarks			
02		12.2023		R.Grecki		07.2023													
01		11.2023		R.Grecki		07.2023		Updated											
Designed by				R.Grecki				Material				Description				Format			
Checked by				B.Jurkowski				Acc. to Parts List (-)				LIFTING DRAWING				A1			
Approved by				K.Sarkowicz				Signature				Weight kg				Sheet No.			
Verified by												Project: ATLAS COPCO - PLOCK				1/2			
Scale		1:20				ROCKFIN Sp. z o.o.		Status		Drawing No.		Revision		Language					
						Palacowa 7, Molkowa				RP-01 / 7002-23/00-000		02		EN/PL					
				ROCKFIN®		POLAND													



TOTAL WEIGHT WITH TRANSPORT PALLET (WOODEN)	8000 kg ± 10%
---	---------------

Scale 1:20	ROCKFIN Sp. z o.o. Pałacowa 9, Molkowo 83-330 Żukowo ROCKFIN® POLAND	Material Acc. to Parts List (*)	Description LIFTING DRAWING Project: ATLAS COPCO - PŁOCK	Format A1
		Status	Drawing No. RP-01/7002-23/00-000	Revision 02
				Sheet No. 2/2

This document contains proprietary information. It is not permitted to copy and make this document available to a third party without consent of ROCKFIN Sp. z o.o. company.